

Material and Finish

Body: High Temperature
Thermoplastic,
UL94V-0 Rated, Black

Contacts: Phosphor Bronze,
Gold Flash over Nickel on Contacts,
Tin over Nickel on Termination

Shield: SPCC, Nickel Plated

Electrical Characteristics

Contact Resistance:

Before Test:

Plug to Shield: 50 Milliohms Max.

Plug to Terminals: 30 Milliohms Max.

After Test:

Plug to Shield: 100 Milliohms Max.

Plug to Terminals: 60 Milliohms Max.

Insulation Resistance:

500 Megohms Min.

Dielectric Withstanding Voltage:

500V AC RMS For 1 Minute

Current Rating:

1 Amp at 18V DC

Mechanical Characteristics

Durability Test: 500 Cycles Min.

Insertion Force: 0.5kg - 4.5kg

Extraction Force: 0.4kg - 3.5kg

Operating Temperature: -25°C to +70°C



Tolerances
X.X ± 0.3
X.XX ± 0.15
Unless Stated Otherwise

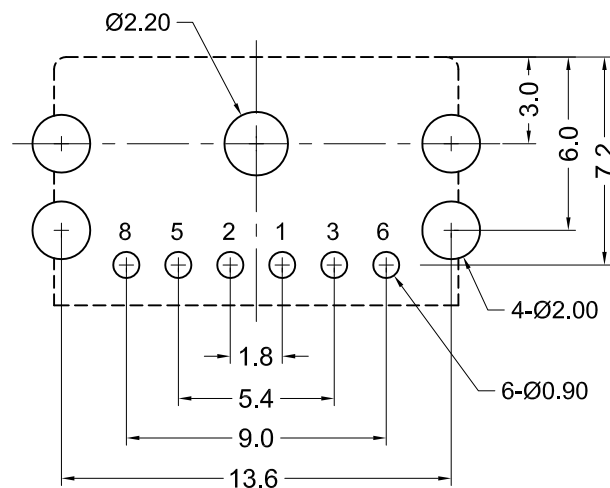
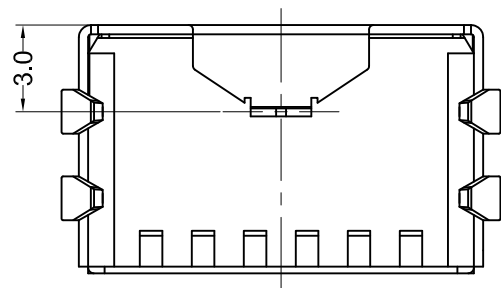
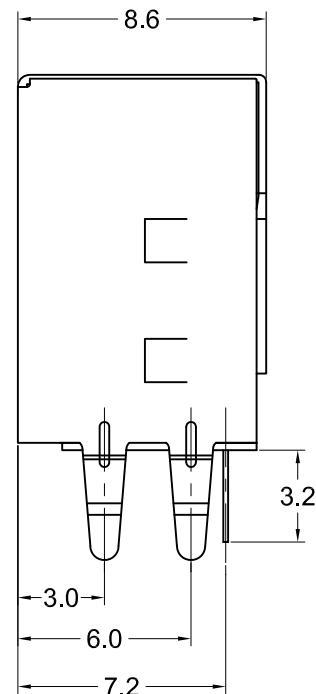
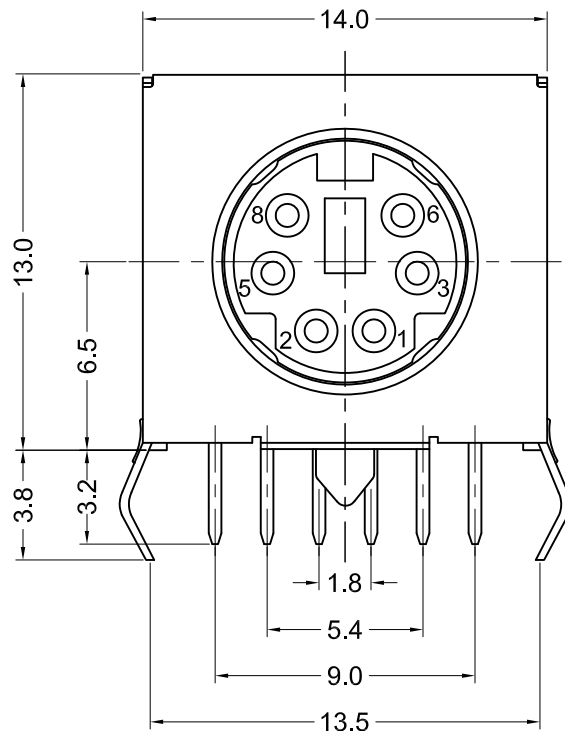
REV.	DATE	DESCRIPTION	REV. BY	CHK. BY	DRAWN BY	DATE
A1	09/06/05	New Drawing	R. Aguirre	H. MA	R. Aguirre	08/02/05
B1	12/30/08	ECO #08-056	S. Vien	H. MA		
B2	01/17/13	ECO #13-001	S. Vien	P. DalCanto		
B3	06/10/14	ECO #14-021	D. Gih	H. MA		
B4	04/12/18	Update Address	J. Elbanna	C. Furumasu		
						UNITS
						mm

KMDTX-HT-4S-BSC

Mini-DIN, Low Profile, Right Angle, RoHS Compliant

Crimped Side Tabs, Fully Shielded





Recommended PCB Layout
(Bottom View)

Material and Finish

Body: High Temperature
Thermoplastic,
UL94V-0 Rated, Black

Contacts: Phosphor Bronze,
Gold Flash over Nickel on Contacts,
Tin over Nickel on Termination

Shield: SPCC, Nickel Plated

Electrical Characteristics

Contact Resistance:

Before Test:

Plug to Shield: 50 Milliohms Max.

Plug to Terminals: 30 Milliohms Max.

After Test:

Plug to Shield: 100 Milliohms Max.

Plug to Terminals: 60 Milliohms Max.

Insulation Resistance:

500 Megohms Min.

Dielectric Withstanding Voltage:

500V AC RMS For 1 Minute

Current Rating:

1 Amp at 18V DC

Mechanical Characteristics

Durability Test: 500 Cycles Min.

Insertion Force: 0.5kg - 4.5kg

Extraction Force: 0.4kg - 3.5kg

Operating Temperature: -25°C to +70°C



www.toby.co.uk

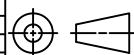
RoHS COMPLIANT

UL
E140125

CS
LR78160

Tolerances
X.X ± 0.3
X.XX ± 0.15
Unless Stated Otherwise

REV.	DATE	DESCRIPTION	REV. BY	CHK. BY	DRAWN BY	DATE
A1	08/09/05	New Drawing	R. Aguirre	H. MA	R. Aguirre	08/02/05
A2	09/06/05	Change shield plating	R. Aguirre	H. MA		
B1	12/30/08	ECO # 08-056	S. Vien	H. MA		
B2	01/07/13	ECO #13-001	S. Vien	P. DalCanto		
B3	06/10/14	ECO #14-021	D. Gih	H. MA		
B4	04/12/18	Update Address	J. Elbanna	C. Furumasu		



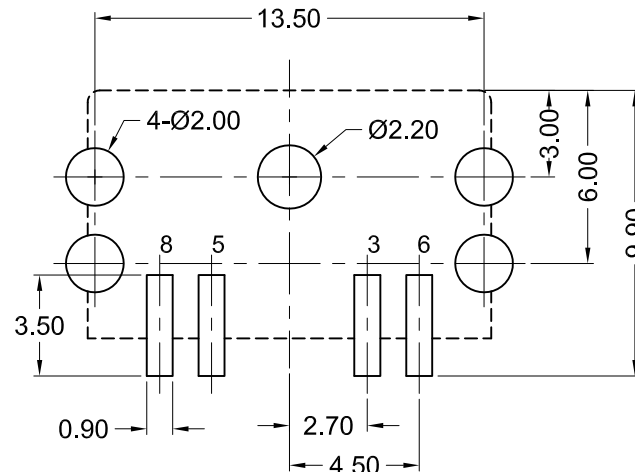
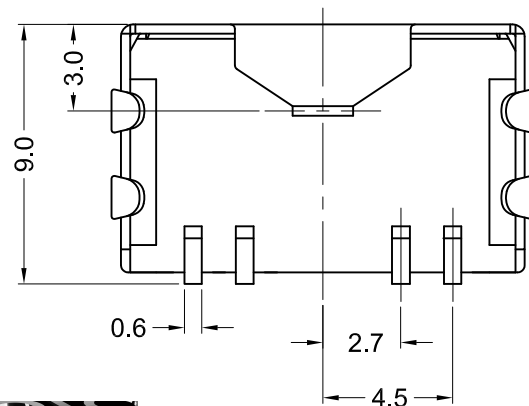
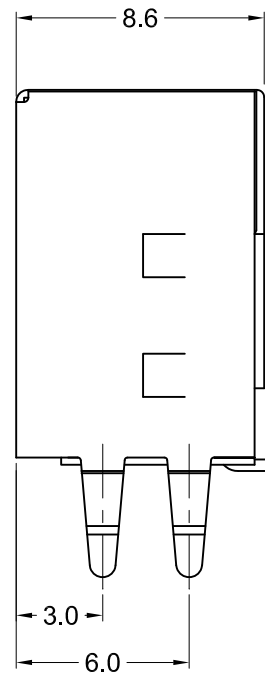
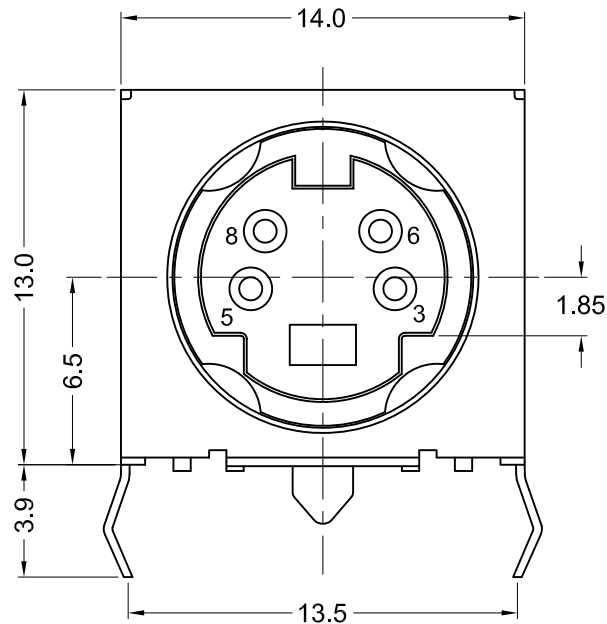
UNITS
mm

KMDTX-HT-6S-BSC

Mini-DIN, Low Profile, Right Angle, RoHS Compliant

Crimped Side Tabs, Fully Shielded





Recommended PCB Layout
(Bottom View)

Material and Finish

Body: High Temp. Thermoplastic,
UL94V-0 Rated, Black,
Reflow Process Compatible

Contacts: Copper Alloy,
Gold Flash over Nickel on Contacts,
Tin over Nickel on Termination

Shield: SPCC
Nickel Plated

Electrical Characteristics

Contact Resistance:

Before Test:

Plug to Shield: 50 Milliohms Max.

Plug to Terminals: 30 Milliohms Max.

After Test:

Plug to Shield: 100 Milliohms Max.

Plug to Terminals: 60 Milliohms Max.

Insulation Resistance:

500 Megohms Min.

Dielectric Withstanding Voltage:

500V AC RMS For 1 Minute

Current Rating:

1 Amp at 18V DC

Mechanical Characteristics

Durability Test: 500 Cycles Min.

Insertion Force: 0.5kg - 4.5kg

Extraction Force: 0.4kg - 3.5kg

Operating Temperature: -25°C to +70°C



www.toby.co.uk

RoHS COMPLIANT

UL
E140125

SP
C US
LR78160

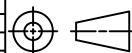
Tolerances

X.X ± 0.3

X.XX ± 0.15

Unless Stated
Otherwise

REV.	DATE	DESCRIPTION	REV. BY	CHK. BY	DRAWN BY	DATE
A1	09/06/05	New Drawing	R. Aguirre	H. MA	R. Aguirre	08/02/05
B1	02/02/10	ECO #10-003	S. Vien	H. MA		
B2	06/10/14	ECO #14-021	D. Gih	H. MA		
B3	04/12/18	Update Address	J. Elbanna	C. Furumasu		



UNITS

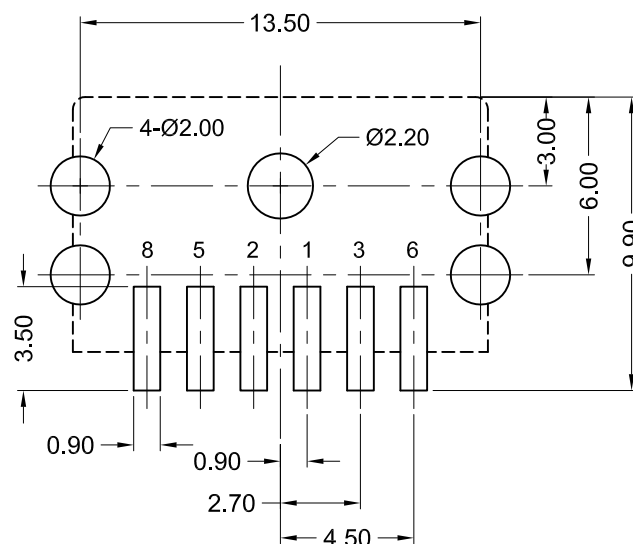
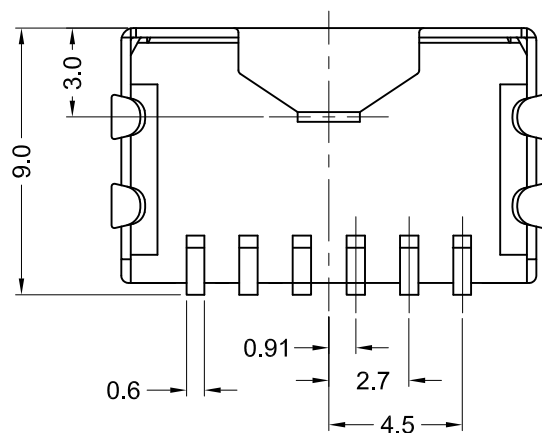
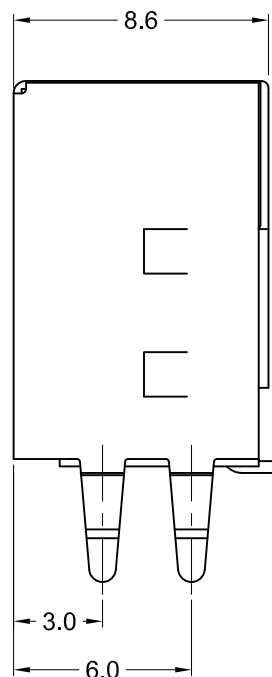
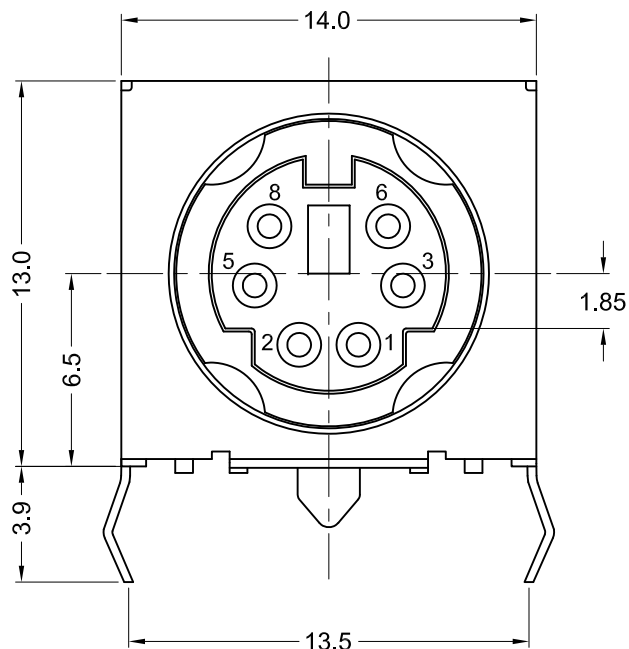
mm

KMDTX-SMT-4S-BSC

Low Profile Footprint Mini-DIN, SMT Type, RoHS Compliant

Crimped Side Tabs, Gold Flash Contacts, Fully Shielded





Recommended PCB Layout
(Bottom View)

Material and Finish

Body: High Temp. Thermoplastic,
UL94V-0 Rated, Black,
Reflow Process Compatible

Contacts: Copper Alloy,
Gold Flash over Nickel on Contacts,
Tin over Nickel on Termination

Shield: SPCC
Nickel Plated

Electrical Characteristics

Contact Resistance:

Before Test:

Plug to Shield: 50 Milliohms Max.

Plug to Terminals: 30 Milliohms Max.

After Test:

Plug to Shield: 100 Milliohms Max.

Plug to Terminals: 60 Milliohms Max.

Insulation Resistance:

500 Megohms Min.

Dielectric Withstanding Voltage:

500V AC RMS For 1 Minute

Current Rating:

1 Amp at 18V DC

Mechanical Characteristics

Durability Test: 500 Cycles Min.

Insertion Force: 0.5kg - 4.5kg

Extraction Force: 0.4kg - 3.5kg

Operating Temperature: -25°C to +70°C



www.toby.co.uk

RoHS COMPLIANT

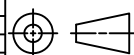
c **UL** ^{us}
E140125

SP ^{us}
C LR78160

Tolerances

X.X ± 0.3
X.XX ± 0.15
Unless Stated
Otherwise

REV.	DATE	DESCRIPTION	REV. BY	CHK. BY	DRAWN BY	DATE
A1	09/06/05	New Drawing	R. Aguirre	H. MA	R. Aguirre	08/02/05
B1	02/02/10	ECO #10-003	S. Vien	H. MA		
B2	06/10/14	ECO #14-021	D. Gih	H. MA		
B3	04/12/18	Update Address	J. Elbanna	C. Furumasu		



UNITS
mm

KMDTX-SMT-6S-BSC

Low Profile Footprint Mini-DIN, SMT Type, RoHS Compliant

Crimped Side Tabs, Gold Flash Contacts, Fully Shielded

