



Notice of Discontinuation

Company: KYCON, Inc.
305 Digital Dr.
Morgan Hill, CA 95037
USA
408-494-0330

3/31/2023

Re: **EOL**

Part Number: KLDX-SMT2-0202-ATR; KLDX-SMT2-0202-BTR

Please note that the above part numbers are EOL due to worn tooling.

Engineering has approved an alternate part.
Please Contact Toby for details: sales@toby.co.uk

Alternate part numbers:
KLDX-SMT2-0202-ATR-1
KLDX-SMT2-0202-BTR-1

Redline comparison drawing is available online at Toby.co.uk

Please Contact Toby if you require more information: SALES@TOBY.CO.UK

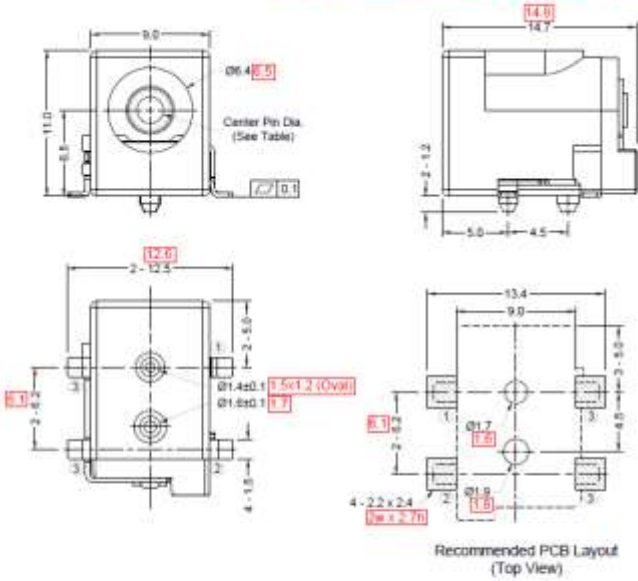
Signature: _____

A handwritten signature in black ink, appearing to read 'Jill Scarnecchia', written over a horizontal line.

Name: Jill Scarnecchia

KYCON, Inc. 305 Digital Drive, Morgan Hill, CA 95037 (408)494-0330

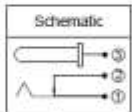
As Compared to KLDX-SMT2-0202-xTR Rev. B5



Materials and Finish
Housing: High Temperature Thermoplastic, UL 94V-0 Rated, Black Color
Contact Material:
Center Pin: Copper Alloy, Nickel Plated
Contact #1: Copper Alloy, Silver Plated
Contact #2: Copper Alloy, Silver Plated
Contact #3: Copper Alloy, Silver Plated

Electrical Characteristics
Rated Current: 5A **(0.5A)**
Rated Voltage: 20V DC **(24V)**
Insulation Resistance: 100 Megohms Min. at 500V DC
Contact Resistance: 30 Milliohms Max. (Initial)
60 Milliohms Max. (After Durability)
Dielectric Withstanding Voltage: 500V AC RMS for 1 Minute

Mechanical Characteristics
Insertion Force: 0.3 Kg - 3.0 Kg **(4.0)**
Withdrawal Force: 0.3 Kg - 3.0 Kg
Durability: 5000 Mating Cycles Min.
Operating Temperature: -35°C to +85°C **(-65°C)**



Part Number	Center Pin Dia.
KLDX-SMT2-0202-ATR-1	Ø2.0 ±0.1 (1.0)
KLDX-SMT2-0202-BTR-1	Ø2.5 ±0.1 (0.05)

RoHS COMPLIANT

Tolerances
X.X ± 0.25
X.XX ± 0.25
Unless Stated Otherwise

PRELIMINARY
PART IN DESIGN
SPECIFICATION SUBJECT TO CHANGE

REV.	DATE	DESCRIPTION	REV. BY	CHK. BY	DRAWN BY	DATE
01	11/20/21	NEW DESIGN	C. KASHER	C. KASHER	C. KASHER	11/20/21
02	02/11/22	CHANGE 1.05A	C. KASHER	C. KASHER	C. KASHER	02/11/22

KLDX-SMT2-0202-xTR-1
UNITS: mm
* Center Pin Option

DC Power Jack, SMT, R/A,
Tape & Reel, RoHS Compliant

