

(1.00 mm) .0394" PITCH • SINGLE ROW DISCRETE WIRE SOCKET

SERIES	PINS PER ROW	WIRE GAUGE	PLATING OPTION	ASSEMBLED LENGTH	OPTION
--------	--------------	------------	----------------	------------------	--------

S1SS = Single Row PVC Cable S1SST = Single Row Blue *Teflon® Cable (28 AWG only)	-02, -03, -05, -07, -10 -15, -20 (Standard sizes)	-28 = 28 AWG -28C = 28 AWG Color Coded Cable (S1SS only) -30 = 30 AWG -30C = 30 AWG Color Coded Cable (S1SS only)	-GF = 3 μ" (0.07 μm) Gold on contact and tail	-"XX.XX" = Assembled Length in Inches (45.72 mm) 01.80" min.	(Required Callout) -L = Single Ended With Latch -L1 = Double Ended Latch down, straight (Pin 1 to Pin 1) -L3 = Double Ended Latch up, straight (Pin 1 to Pin N) -S = Single Ended No Latch -D-NUS = Double Ended No Latch, "N" up, straight -D-NDS = Double Ended No Latch, "N" down, straight
---	---	--	---	--	--

MICROMATE™

S1SS(T)

Board Mates:

T1M

Cable Mates:

T1SS(T), T1PS(T)

SPECIFICATIONS

Insulator Material:

Nylon, White (with latch)
Black, LCP (without latch)

Contact Material:

Phosphor Bronze

Plating:

Au over 50 μ" (1.27 μm) Ni

Operating Temp Range (S1SS(T)/T1M):

-10 °C to +85 °C (PVC)

-40 °C to +125 °C (Teflon®)

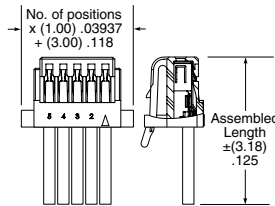
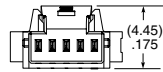
Current Rating (28 AWG):

2.7 A per pin (1 pin powered)

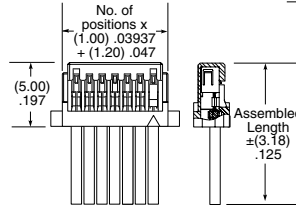
Voltage Rating:

250 VAC/353 VDC

Wire: 28 or 30 AWG



LATCH (-L)



NO LATCH

S1SS CABLE COLOR CODING

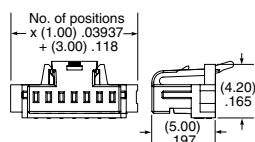
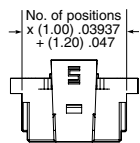
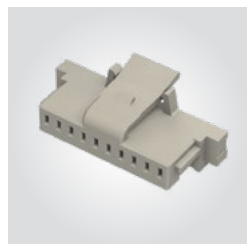
PIN	COLOR
1	BROWN
2	RED
3	ORANGE
4	YELLOW
5	GREEN
6	BLUE
7	VIOLET
8	GRAY
9	WHITE
10	BLACK
ETC	REPEAT

*DuPont™ Teflon® is a registered trademark of the E.I. du Pont de Nemours and Company or its affiliates.

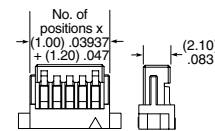
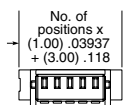
Note:
Teflon® cable is intended for crimp only. Contact Samtec for solderable cable applications.

SERIES	NO. OF POSITIONS	LATCH	SERIES	01	PLATING
--------	------------------	-------	--------	----	---------

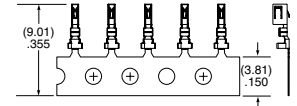
ISS1 = Single Row Body	-02, -03, -05, -07, -10, -15, -20	(Leave blank for no latch) -L = Positive Latch	CC09R = Contact, Full Reel (30,000 Parts per Reel)	01	-GF = 3 μ" (0.07 μm) Gold contact and tail
----------------------------------	--	---	--	-----------	--



LATCH (-L)



NO LATCH



TOOLING

Hand Tool: CAT-HT-309-2830-12

Clamp for mounting hand tool: CAT-HT-MNT-01

Mini Applicator: CAT-MC-309-2830-XX-01

Note:

Some lengths, styles and options are non-standard, non-returnable.